

# ESee 3D Deconvolution Module

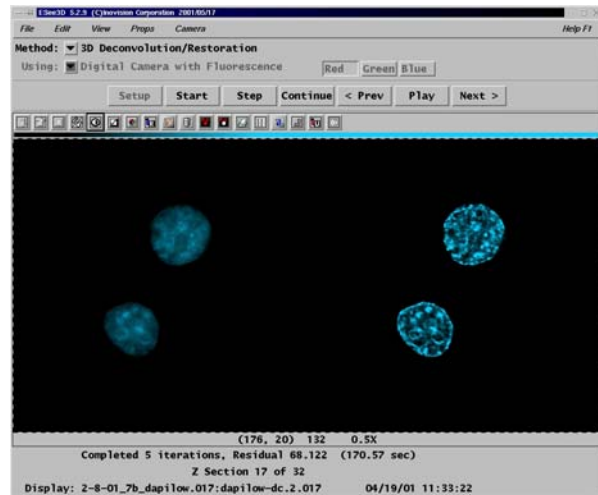
For:

ISee PC Imaging Software

ISee MAC Imaging Software

ISee SGI Imaging Software

The ESee 3D Deconvolution Module for ISee Imaging Software is designed to be used in conjunction with ESee Graphical Interface. The ESee 3D Deconvolution Module provides an easy to use interface for hardware setup, acquisition of optical sections and point spread functions, fast 3D Deconvolution of acquired optical sections, and a wide array of analysis and visualization tools.



Based on the constrained iterative<sup>(1)</sup> algorithm, the ESee 3D Deconvolution Module provides the user with the versatility to:

- Visualize, in real time, both the original and deconvolved images as they are being processed.
- Select from a wide array of input image sizes up to 1K x 1K x 128 images down to 128 x 128 x 32 images.

